

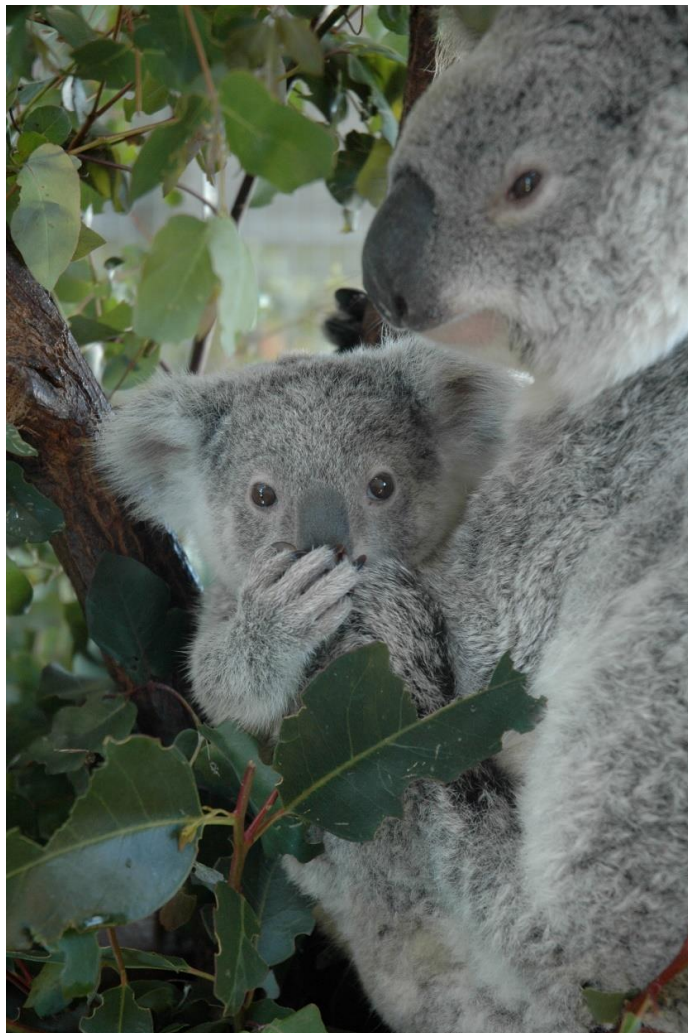


## FRIDAY ENVIRONMENT FORUM NPA Environment Centre

13 July 2018

### Coolum to Cooloola Continuous National Park Strategy

Noosa Parks Association's long held vision of a continuous National Park running from Coolum to Cooloola is now very nearly a reality, following a recent breakthrough NPA-conceived agreement between a private timber company, the state government, Noosa Council, and NPA.



*Noosa's iconic koalas in Yurol forest*

Private harvesting licences within the 2,600 hectares of state owned forest between Tewantin, Cooroy, Pomona and Boreen Point will be phased out and the private timber company compensated \$3.5 million, with NPA, Noosa Council and Queensland's Department of Environment and Science each contributing one third, and the 2,600 hectares will be added to Tewantin National Park.

This will double the size of Tewantin National Park to over 5000 hectares, and physically join it with Cooloola National Park. Only a small gap will remain between Noosa and Tewantin National Parks.

In the face of global climate change, long term adaptation of the Noosa-Cooloola-Fraser Island region's treasure trove of flora and fauna, including Noosa's iconic koalas, will be assisted by such a continuous, regional scale and perpetually protected National Park estate.

At this week's Friday Environment Forum, NPA President **Dr Michael Gloster**, the architect and driver of NPA's Coolum to Cooloola continuous National Park strategy over the past 25 years,

will for the first time publicly tell the behind-the-scenes story of this conservation breakthrough.

All are welcome at the **Noosa Parks Association Environment Centre 5 Wallace Drive, Noosaville** on **July 13**. The forum starts at 10.30am and ends at 12.15pm, with coffee and chat on offer from 10am. To enjoy the birds of Wallace Park before the forum, join Valda and the other bird observers at 8.30am in the Environment Centre carpark.